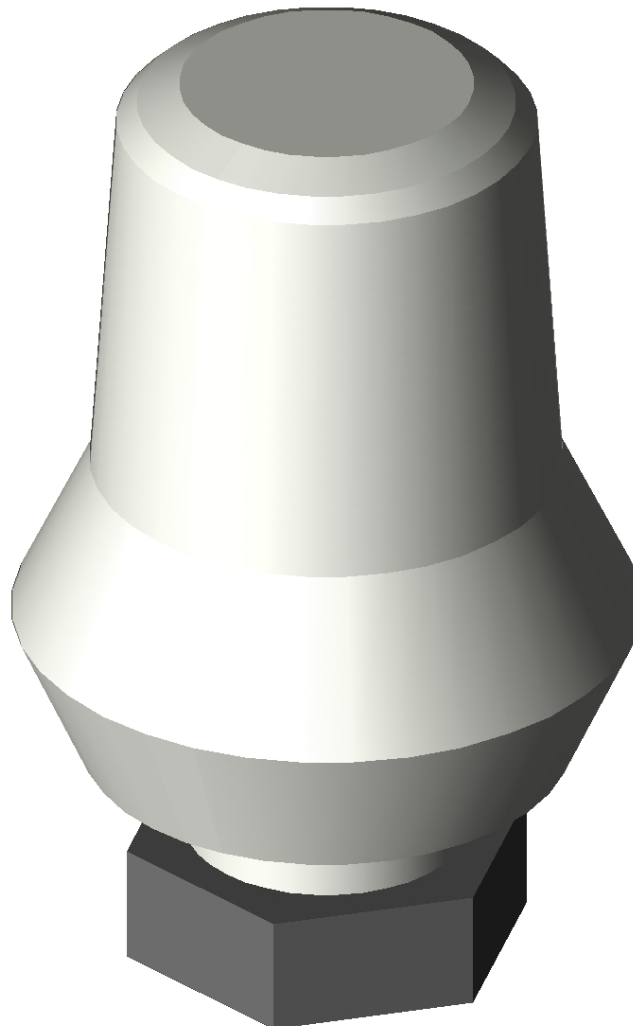


## T6002

CAD DATA

### 3D Functions

(click on picture to activate)



### CAD Files

(double click on top of icon to open, right click to save)

[Honeywell\\_T6002\\_3D.dxf \(DXF V2004\)](#)  
[Honeywell\\_T6002\\_3D.dwg \(DWG V2004\)](#)  
[Honeywell\\_T6002\\_3D.stp \(STEP AP214\)](#)  
[Honeywell\\_T6002\\_3D.igs \(IGES 5.3\)](#)  
[Honeywell\\_T6002\\_3D.sat \(SAT 7.0\)](#)  
[Honeywell\\_T6002\\_2D\\_Left.dwg \(DWG V2004\)](#)  
[Honeywell\\_T6002\\_2D\\_Right.dwg \(DWG V2004\)](#)  
[Honeywell\\_T6002\\_2D\\_Front.dwg \(DWG V2004\)](#)  
[Honeywell\\_T6002\\_2D\\_Top.dwg \(DWG V2004\)](#)

Product data	
Brand:	Honeywell
Date:	12.06.2010